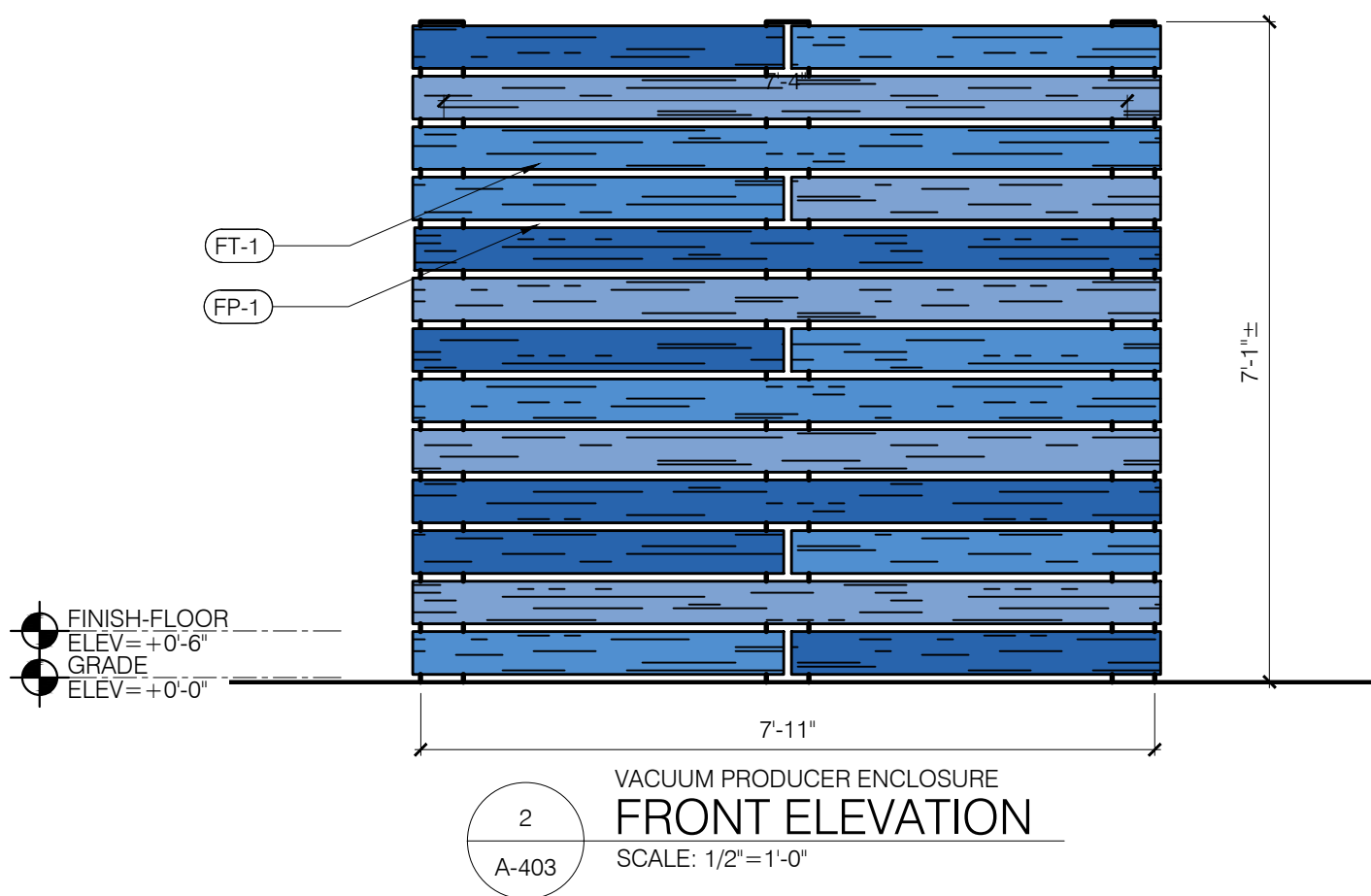
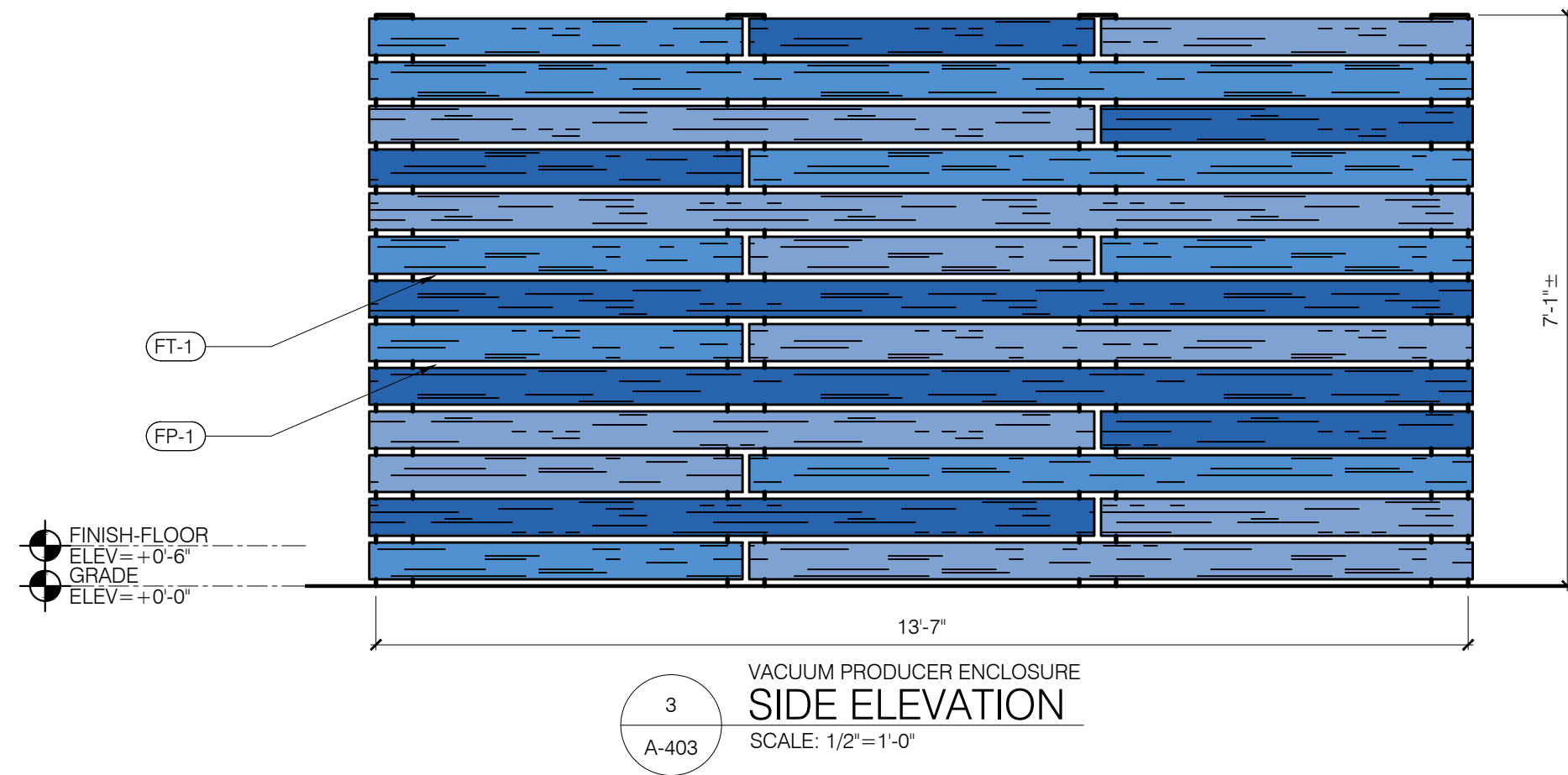


1  
A-404  
VACUUM PRODUCER ENCLOSURE  
ENLARGED PLAN DETAIL  
SCALE: 1/2" = 1'-0"

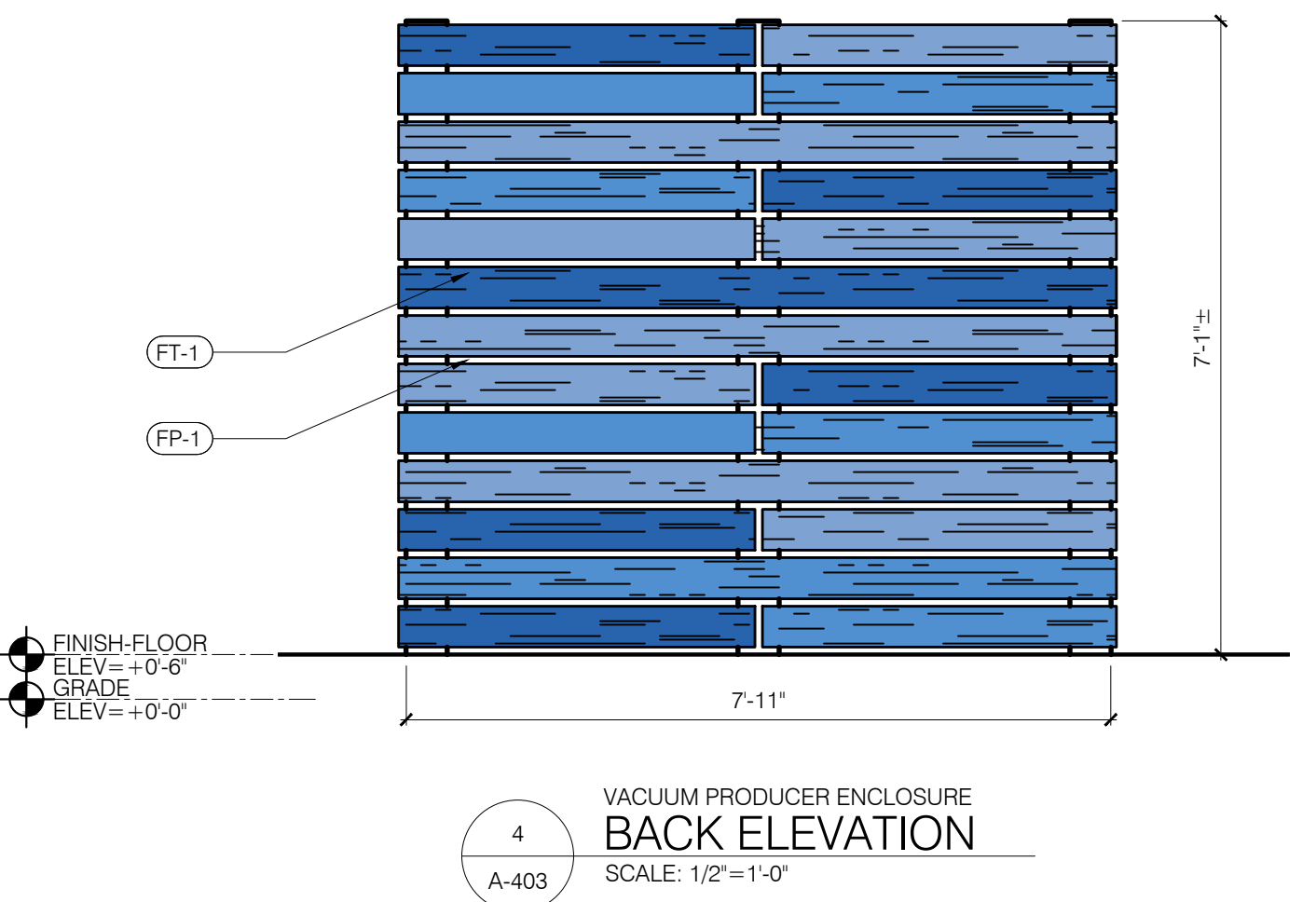
FOR ADDITIONAL ENCLOSURE CONSTRUCTION DETAILS,  
REFER TO TRASH ENCLOSURE SHEET A-402, SIM.



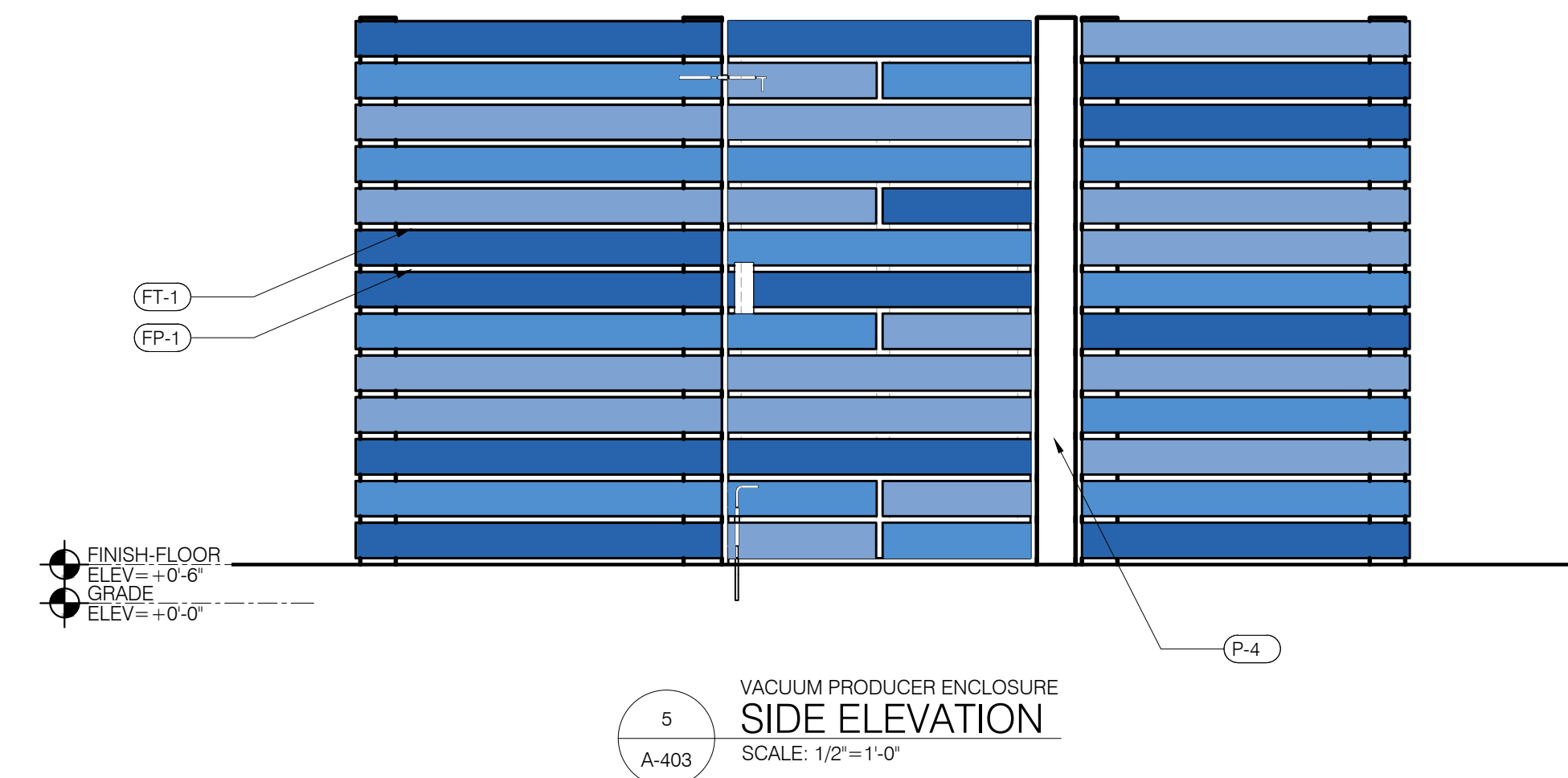
2  
A-403  
VACUUM PRODUCER ENCLOSURE  
FRONT ELEVATION  
SCALE: 1/2" = 1'-0"



3  
A-403  
VACUUM PRODUCER ENCLOSURE  
SIDE ELEVATION  
SCALE: 1/2" = 1'-0"



4  
A-403  
VACUUM PRODUCER ENCLOSURE  
BACK ELEVATION  
SCALE: 1/2" = 1'-0"



5  
A-403  
VACUUM PRODUCER ENCLOSURE  
SIDE ELEVATION  
SCALE: 1/2" = 1'-0"



VERANDA

BY Barrette

OUTDOOR LIVING

Vinyl Fence

Veranda Products. By Barrette Outdoor Living.

Assembly Instructions

Instrucciones de ensamble

READ INSTRUCTIONS PRIOR TO INSTALLATION

LEA LAS INSTRUCCIONES ANTES DE LA INSTALACIÓN

Materials Needed

Materiales necesarios

Panel

Panel

Post

Postes

Post Tops

Remates para poste

Vinyl Cement

Cemento para vinilo

Concrete

Concreto

Plex Gravel

Gravilla tipo guisante

1. Fence Location

Mark the fence location using string and line stakes.

Ubicación de la cerca

Marque la ubicación de la cerca utilizando una cuerda y estacas alfileradas.

2. Post Location:

Measure the width of the fence panel (X) plus the width of the post (Y). This is the common center-to-center measurement (unless there is a cut-down panel) for post hole location (Fig. 2).

Ubicación del poste:

Mida el ancho del panel de valla (X) y suma el ancho del poste (Y). Esta es la medida normal de centro a centro (a menos que se corte el panel) (Fig. 2).

3. Post Installation:

Dig first two post holes 10" in diameter down to your specified frost line. Insert filter/gravel into the bottom of both holes and then set first post in post hole. Add wet or dry concrete mix according to the manufacturer's instruction to the top of the hole for first post only and level it (Figure 3).

Example: When your frost line is 36" insert 12" of gravel/filler and 24" of post with concrete surrounding.

Instalación del poste:

Cave los primeros dos agujeros para poste de 10 pulgadas de diámetro hasta la línea de penetración del congelamiento. Inserta el relleno o grava en el fondo de ambos agujeros y a continuación, coloque el primer poste en el agujero. Añade una mezcla de concreto húmedo o seco de conformidad con las instrucciones del fabricante hasta la parte superior del agujero para el primer poste y nivele. (Figura 3).

Ejemplo: Cuando la línea de penetración del congelamiento es de 36", inserta 12" de grava o relleno y las restantes 24 pulgadas del poste con concreto.

4. Insert bottom rail into bottom post route hole (Fig. 5).

Inserte el travieso inferior en el orificio rebajado inferior del primer poste solemante (Fig. 5).

5. Attach U-channels to boards (Fig. 6).

Supite los canalistas en U a las tablas (Fig. 6).

6. Insert boards from left to right into bottom rail ensuring U-channels are on both ends (Fig. 7).

Encastre las tablas de izquierda a derecha en los traviesos inferiores y asegúrese de que los canalistas en U estén unidos en ambos extremos (Fig. 7).

7. Insert the top rail into the left side of the post route then guide over top of boards (Fig. 8).

Inserte el travieso superior en el lado izquierdo del orificio rebajado y luego deslízalo sobre las tablas (Fig. 8).

8. Insert the completed fence panel into the route hole of the second fence post.

Punte and level the post and add concrete according to manufacturer's instructions (Fig. 9).

Encastre el panel completo de la cerca en los orificios rebajados del segundo poste y añada concreto de acuerdo con las instrucciones del fabricante (Fig. 9).

9. Check to ensure the second post is level, then measure panel plus the dimensions from center of second post to center of next and dig the third post hole accordingly (Fig. 10).

Encastre el panel completo de la cerca en los orificios rebajados del segundo poste y añada concreto de acuerdo con las instrucciones del fabricante (Fig. 10).

10. Repeat steps 2 to 9 until all fence panels and posts have been installed (Fig. 11).

Repita el procedimiento de los pasos 2 a 9 hasta que todos los paneles y postes de la cerca estén instalados (Fig. 11).

11. Apply glue on inside rim of post tops, then attach

Aplique pegamento en las bordes interiores de la parte superior de los postes y adhérales a los postes (Fig. 12).

6  
A-403  
VINYL FENCE DETAIL  
NOT TO SCALE

VINYL FENCE SHALL BE LINDEN 6FT. TALL X 8 FT. WIDE WHITE VINYL PRIVACY FENCE FIT FROM HOME DEPOT OR OTHER APPROVED EQUIVALENT.

EXTERIOR FINISH SCHEDULE			
MARK	CATEGORY	MANUF.	DESCRIPTION
EF-1	EXTERIOR INSULATION AND FINISH SYSTEMS (EIFS)	SENERGY (OR EQUAL)	CHANNELED ADHESIVE CI DESIGN, FINE FINISH, COLOR TO MATCH: PPG, 1243-5 "BLUE DART"
EF-2	EXTERIOR INSULATION AND FINISH SYSTEMS (EIFS)	SENERGY (OR EQUAL)	CHANNELED ADHESIVE CI DESIGN, FINE FINISH, COLOR TO MATCH: PPG 1025-1 "COMMERCIAL WHITE"
FP-1	5/8" EXTERIOR GRADE PLYWOOD	T.B.D.	COLOR TO MATCH: PPG 1025-1 "COMMERCIAL WHITE" SEMI-GLOSS FINISH
FT-1	TRIM BOARDS	JAMES HARDIE™ OR APPROVED EQUAL	HARDIETRIM® BOARDS 3/4 x 5-1/2" SMOOTH x VARYING LENGTHS OR APPROVED ALTERNATE, COLOR TO MATCH: PPG 1244-4 "BOUDOIR BLUE" SEMI-GLOSS FINISH PPG 1243-5 "BLUE DART" SEMI-GLOSS FINISH PPG 1243-7 RAINBOW BRIGHT™ SEMI-GLOSS FINISH
M-1	METAL	PAC-CLAD	AWNING COLOR: TO MATCH P-4 "BLUE DART" SEMI-GLOSS FINISH
M-2	METAL	PAC-CLAD	METAL COPING, COLOR: "BONE-WHITE"
M-3	METAL	PAC-CLAD	METAL COPING, COLOR: "BONE-WHITE"
P-1	PAINT	PPG	PPG 1025-1 "COMMERCIAL WHITE" SEMI-GLOSS FINISH
P-2	PAINT	PPG	PPG 1025-1 "COMMERCIAL WHITE" SEMI-GLOSS FINISH
P-4	PAINT	PPG	PPG 1243-5 "BLUE DART" SEMI-GLOSS FINISH
PB-1	8" SMOOTH FACE SCORED CMU	T.B.D.	8" SMOOTH FACE SCORED CMU w/ ARGOS "TYPE-N GRAY" MORTAR, TOOLED JOINTS. PAINT COLOR PPG 1025-1 "COMMERCIAL WHITE" SEMI-GLOSS FINISH
SF-1	STOREFRONT	YKK	ALUMINUM STOREFRONT SYSTEM w/ TEMPERED CLEAR GLAZING, COLOR: CLEAR ANODIZED ALUMINUM

REGISTERED ARCHITECT  
PENNSYLVANIA  
10/30/2023  
DATE

10/30/2023  
DATE

PREPARED BY:

AXIS INFRASTRUCTURE

70 Mansell Ct., Ste. 200  
Roswell, Georgia 30076  
Phone: 678.395.4920

PREPARED FOR:

Hutton

REAL ESTATE DEVELOPMENT CONSTRUCTION

DRAWN BY:

AC

REVIEWED BY:

BK

PROJ. MGR.

DATE ISSUED:

02/03/2022

FIN. AT:

EXIT

SITE ADDRESS:

125 KM ACRES DRIVE

MECHANICSBURG, PA

TITLE:

MODWASH EXPRESS CARWASH

DESCRIPTION:

8" CMU BEARING WALLS  
STEEL TRUSS ROOF FRAMING  
EIFS ON MIL STUDS • DECORATIVE WALLS  
124" NORTHERN PROTOTYPE W/120" CONVEYOR

SHEET NO.:

A-404

VACUUM ENCLOSURE

REV

E

10/30/23

VACUUM PRODUCER ENCLOSURE UPDATES

DESCRIPTION

BY





